

TheDefiler

April 1, 2022

The Fake Voice of the Students

Volume 77, Issue 8.5

Native Long Islander Billy Joel Sues Adelphi for UC's Similarity to "Glass Houses" Album Cover

BY JOSEPH D'ANDREA

In January 2021, Adelphi University revealed the opening of the Ruth S. Harley University Center (UC), complete with a new dining hall, improved meeting and event rooms, expanded study areas and an array of even more resources. However, the news of the new UC's completion has just gotten around to one of the greatest musicians of our time—Long Island's own Billy Joel.

The reimagined, inviting UC on the Garden City campus comes with all the aforementioned amenities that are accessible inside the building, but what grabbed Joel's attention seemed to be the outer design. Complete with a sharp-looking, architectural glass exterior, the just over one-year-old UC exhibits a contemporary, fresh feeling of the campus' hub. However, to Joel, this design struck a different chord.

To many fans of the Piano Man and a lifelong listener myself, Joel's 1980 rock 'n' roll album titled "Glass Houses" is undoubtedly one of the singer-songwriter's finest works. From "You May Be

Right," the opening track that kicks off the album with a bang, to other signature songs like "All for Leyna," the LP, quite literally, rocks from beginning to end.



Billy Joel has sought legal action against Adelphi claiming the renovated University Center looks just like his album cover from "Glass Houses."

But, as fans will also know, the album cover displays the leather-jacket-donning Joel winding up to throw a rock at a

glass house. It's that glass house that has stirred up some conflict between Joel and Adelphi as the star claims the UC design is too similar to his album cover.

"It's uncanny," Joel, 72, stated in an exclusive interview with *The Delphian*. "I release 'Glass Houses,' and the next thing you know, Adelphi starts construction on a building that's practically a replica of what's shown on the cover."

When asked if he realized that the UC's formation came about 40 years after "Glass Houses" hit record store shelves, Joel declined to comment. "Madison Square Garden is going to be shut out until I receive a settlement from Adelphi."

Accusing Adelphi of copyright infringement, Joel went on to say, "What's next? Someone opening up an Italian restaurant? Naming a season after 'Summer, Highland Falls?' Fashion designers making a heel called a 'stiletto?' I show my love for Long Island more than anyone else out there, but this is downright ridiculous. Adelphi, there's a civil stormfront coming."

Why haven't you heard about this

Continued on page 2

Microsoft Officially Declares Apple Computers "Just too Powerful"

BY JUSTIN KRESSE

Friday, April 1 at 12:30 pm is the official time of death. Yes, that's right, Microsoft laid down in defeat, officially declaring that Apple is the winner of their long-standing fight for the soul of the world. Okay... maybe I'm exaggerating a little, but this is pretty huge!



Microsoft co-founder Bill Gates officially declared on Twitter that Microsoft is ending work on Windows and switching focus to the exciting Windows phone project.

In his official Twitter statement, Bill Gates declared that "after years of intense competition, it is clear that Apple's new computers are just too powerful to compete against."

Apple recently transitioned their computers from Intel-based processors, which had been holding them back for years, to their own Apple silicon chips. The move has given Apple's computers both a huge improvement in battery life and performance, making them the all-around winners. Gates clearly realized that Microsoft would not be able to compete with this proprietary technology.

Microsoft's CEO Satya Nadella couldn't be reached for a response, but the company sent out a news statement saying that Gates, who co-founded the company in 1975 with Paul Allen, is correct in saying that Apple has beaten the computer giant out with their new computer hardware.

In the statement, they described their plans for the future: "This does not mean the end for Microsoft as a whole — just the

Continued on page 2

Disney World is Coming to the Big Apple

BY MYLO FISHERMAN

Disney is the happiest place on earth. Unfortunately for us, we spend most of our time going to school in New York, which is miles away from the Disney parks. The closest park to us is Disney World in Florida, which is about a two-and-a-half-hour plane ride and about a 28-hour drive. As we are all college students, it's nearly impossible to afford these plane tickets or the amount of gas it would take to drive to Disney World and still have enough money to afford the tickets to the park itself and a hotel to stay a few days.

Disney lovers...get excited as a new Disney park is being built in New York City! Now all of the childhood memories of going to the Disney parks to see all the characters, riding all the rides while eating Mickey waffles and ice bars can be obtained just a short car or train ride away.

This park will be smaller in size when compared to Disney World in Florida but more comparable in size to Disneyland in California. Due to its stature, the park tickets will be cheaper than that of Disney World and will be about \$40 general admission.

The park was designed to be a sampler version of Disney World with the four main sections being themed after the four main parks in Disney World:

Magic Kingdom, Animal Kingdom, Epcot and Hollywood Studios. The sections in Disneyland NYC will be named: Magic Square, Animal Village, Nation's Pavillion and Movie World.

At the heart of Movie World, you



A trip to Florida is no longer necessary to get your Disney fix as company executives announce a new park to be built in NYC.

will be able to find the park's main attraction which will be centered around the 2007 Disney movie "Enchanted."

This wild ride will trail us through New York City just as the characters did in the film. As the main leads of the movie were Amy Adams and Patrick Dempsey,

they will be at the park's entrance waiting to take the ride along with the first 1,000 guests.

Although the opening of the park has sparked joy in a lot of New Yorkers, attitudes at Adelphi seem to be unfavor-

able.

Oliver Koenig, a third-year communications major, said bluntly: "Nobody needs that. NYC is cluttered and busy enough already and where would they even put it? They'd have to level a bunch

Continued on page 3

A Word from the Editor

Happy Friday! This day gifts you with the latest edition of *The Delphian*. This year has been filled with many news stories, ranging from mask mandates, racial equality and updates on world news situations. Despite all of that we continue to move strong and keep going forward, and with this issue, I plan to make an effort to release more newspaper editions as often as possible. But there's a catch...

April Fools! Consider this to be issue number eight and a half. Issue nine will be out on April 4, but this is our annual special edition newspaper called *The Defiler*, where we put out meaningful stories, only to find out they are fictitious. This is a tradition we carry every April Fools' Day and it is my honor and privilege to continue the quest.

This four-page issue has it all, ranging from stories such as Disneyland coming to New York City, making it more convenient for our native Long Islanders to go on the pursuit of happiness. We also will be adding a de-stressing petting zoo, making its appearance on our Garden City campus for the first time ever. Furthermore, learn more about how Billy Joel decided to sue our campus because of a design of the University Center that is vastly similar to one of his own creations. Along with that we have another story that explains the situation behind the secret with M&M story that has been featured on Instagram and has made a big buzz across campus.

All of these stories are very important because even though they are fictitious, each holds a significant meaning and highlights writing styles.

If you would like to become a part of staff or join the paper please email us at Delphian@adelphi.edu. If you have any further questions or inquiries, feel free to contact me directly maxmillianrobinson@mail.Adelphi.edu. In the meantime, have a terrible day. April Fool's! Look for our regularly scheduled real issue on Monday, April 4.

Maxmillian Robinson '22
Editor-in-Chief



TheDefiler

Editor-in-Chief
Maxmillian Robinson

News Editor
Katie Farkas

Features Editor
Bianca Viana

Opinions Editor
Nicholas Rontanini

Sports Editor
Maxmillian Robinson

Production Editor
Justin Kresse

Staff Writers
Mitch Cohen
Joseph D'Andrea
Mylo Fisherman
Lizz Panchyk

Delphian Advisor
Liza N. Burby

Volume 77, Issue 8.5

Earle Hall Media Center
One South Avenue
Garden City, NY 11530

HOW TO REACH US

Main Office: 516-877-6935
E-mail: delphian@adelphi.edu

LETTERS TO THE EDITOR

Letters must be less than 400 words and include the author's name and affiliation to Adelphi. Letters may be edited for the purposes of space and clarity. Send to delphian@adelphi.edu

ORIGINAL ART

Original drawings, photographs and political cartoons can be sent to delphian@adelphi.edu. Please attach name and affiliation to Adelphi.

ADVERTISING

For advertising rates, email us at delphian@adelphi.edu.

FOLLOW US ON SOCIAL MEDIA

Website: www.thedelphianau.com
Twitter: @the_Delphian
Facebook: The Delphian
adelphi-delphian.blogspot.com
Instagram: @the_delphian

If you want to join the paper as a writer, photographer, designer, advertising manager or social media contributor, contact us at delphian@adelphi.edu.

Billy Joel Sues Adelphi for Album Cover

Continued from page 1
dilemma before now? Simply, the issues brought about by the Covid-19 pandemic, as well as the focus on Adelphi's celebration of their 125th anniversary seemed to have overshadowed the rock star's complaints about the university's architectural choice. However, Joel wants to bring this controversy to the public.

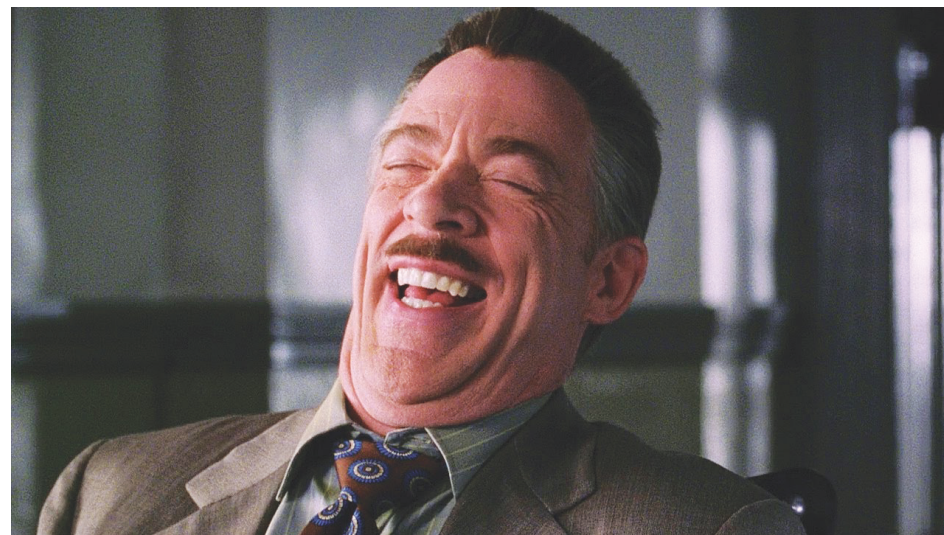
"I haven't seen this much disrespect since the hacks over at 'Rolling Stone Magazine' left Sinatra off of their '100 Greatest Vocalists of All Time' list," Joel went on to say. "It's one thing to design a building, but to not consult me beforehand seems like a slap across the face. I don't have a vendetta against Adelphi specifically, you know. If someone out of the blue named a street '52nd Street' without my permission, I'd go after them just as aggressively."

As of January 2022, Joel has been banned from entering the Garden City campus after he was apprehended while attempting to throw a rock at one of the UC's new windows. The "Movin' Out" artist has also been spotted the past couple of months making routine visits to the mayor of Pennsylvania regarding the state's usage of "Allentown" for one of their cities.

Microsoft Declares Apple Wins

Continued from page 1
end for our foray into desktop computer technology."

Their plan is to focus on the mobile technology market by expanding pro-



Apple CEO Tim Cook responded to Microsoft's future plans on Twitter with a popular GIF of J. Jonah Jameson from the movie "Spider-Man 2."

duction of their Windows Phones — a currently discontinued product that they plan to bring back. Microsoft's statement had this to say: "Apple may have beaten us when it comes to desktop computers and laptops, but we are optimistic that mobile devices are the future and look forward to great development in the Windows Phone department. You can expect to see the latest and greatest in mobile technology by the end of this year."

So what does this major change for

Microsoft mean for other companies? For starters, Apple is expecting a large growth for their computer sales. In terms of their new competition to the iPhone lineup, Tim Cook's response on Twitter was a popular

GIF from the "Spider-Man 2" movie of J. Jonah Jameson laughing. It seems pretty clear that Cook is not expecting much from the new Windows Phone.

But what does Microsoft's shift mean for computer hardware developers like Dell or HP who make computers using the Windows operating system? In Microsoft's statement, they said that the Windows servers would be shut off effective April 1, 2023, adding, "It would not be financially responsible for Microsoft to continue pour-

ing funds into a technology that is obsolete, thereby allowing users to cling to this outdated technology."

That means both hardware developers and individuals will have to look elsewhere for a new OS for their computers.

The Linux Operating System family is looking like the current logical choice, but many are hoping that a different company will step up to fill the slightly-less-user-friendly OS void that Microsoft is leaving. Rumors are circulating about numerous companies looking to develop an operating system to replace Windows. Tesla and Amazon have already started development of Mars OS and Moon OS respectively, but it will likely be a while till either is unveiled to the public.

For the moment, Apple looks like the safest bet for computers — if they weren't already. Their new computers are just too good to compete with.

Sign up for Delphian+ our new streaming service with content from students, faculty and celebrities like Mark Zuckerberg.

De-Stress Petting Zoo Room Arrives on Campus to Help Calm Students

BY MYLO FISHERMAN

As college students we're more prone to stress due to our workload, jobs, social lives and general desire to succeed. Of course, you can always go to the Student Counseling Center (SCC) whenever you need help as they provide high-quality individual and group counseling services to all students who may be experiencing psychological, behavioral or learning difficulties. You can seek services by going to the counseling center by walking to Nexus room 132, calling them on the phone at 516-877-3646 or by emailing them at scc@adelphi.edu.

As helpful as everyone is in the counseling center, their resources have been spread thin as the Covid-19 pandemic has left everyone with higher amounts of stress than ever before. Because of this, it was crucial to have a permanent solution to relieve our stress on a daily basis. In the SCC's new initiative, there will soon be a de-stress petting zoo room at Adelphi University.

This room will be staffed by a faculty member at all times and will be designed to allow students to come and go as they please petting all of the animals they wish. The room will have a fenced-in area where you can enter, ensuring that the animals can

freely roam when they're not being petted. Additionally, there will be fenced-in areas where you can take an animal with you if you want alone time with a four-legged or

nated to the American Society of Prevention of Cruelty to Animals (ASPCA).

The petting zoo will alternate the animals in residence giving all animal lovers a



As stress levels increase, Adelphi's SCC developed a new initiative to lower stress levels campus-wide.

winged friend. On top of this, there will be a feeding station that will take debit, credit or meal swipes that will allow you to share an animal-friendly meal. The proceeds made from the feeding station will be do-

chance to see their favorite. This will also ensure the safety of the animals as they will spend some time at Adelphi and the rest of the time on a farm. Some of the visitors you can expect to see in the de-stress

petting zoo are ponies, mini cows, sheep, goats, piglets, tortoises and chickens. Special requests can be made for puppies and kittens as well.

This concept has been well-received among some of our community members.

Oliver Koenig, a third-year communications major, stated that they "would love that" in reference to having the petting zoo on campus. They added, "That would be awesome."

Gray, a sophomore, stated that they thought that would be pretty cool. She added, "As long as the animals are treated well, and well cared for, I'm on board."

Other Adelphi members feel the university does not have what it takes to pull off the de-stressing petting zoo. Wynn Andersen, a freshman studio art major, stated, "In theory that sounds amazing but I do not have enough trust in a lot of people that would be needed to make it possible."

Valery Vasquez, a senior ethics and public policy major, said, "I think a petting zoo would be nice in theory but it would be hard to keep control of and a bit distracting especially if someone decides to lose an animal."

If you want to see if this de-stressing zoo is a reality, you just might have to present it to the administration. After all, who couldn't use a little time with a pet?

Moving Backwards on Daylight Savings Time

BY MITCH COHEN

Every spring, we all go through the ritual of changing the clocks forward. Originally created in the 18th century, the practice of Daylight Savings time was used to reduce the consumption of candles. In the modern world, Daylight Savings has become a nuisance, as technology has been created to reduce the amount of electricity that people consume. On March 15, 2022, the Senate passed a bill to make daylight savings time permanent all year. As for Adelphi University, they have decided to move the clocks backward by two hours.

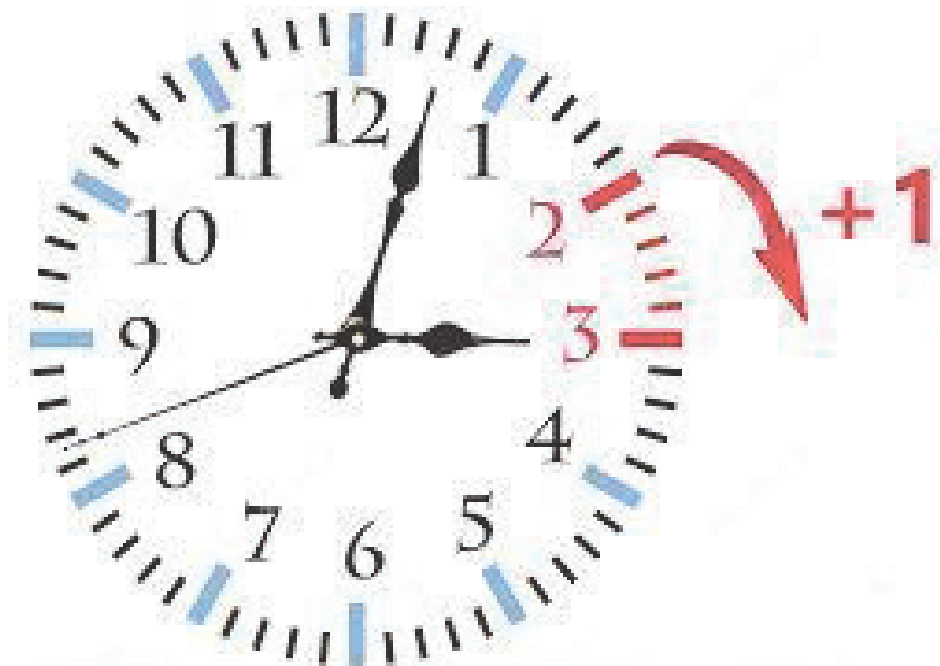
At Adelphi, spring is a time when students are able to enjoy the warm weather and spend time outside. However, the decision to set the clocks backward two hours could make springtime plans almost nonexistent. Many Adelphi professors have complained about how Daylight Savings time is making students more apathetic with their studies, as the beautiful weather is interfering with their ability to focus. By setting back the clocks by two hours, professors believe that students will be able to have better concentration when the sun is down and won't be as distracted with the springtime activities.

As for how the students feel about this change, many have protested in front of Levermore Hall to make administration change the clocks back to how they were. Some complaints that students have include having less time to enjoy the sunshine and an increase in depression due to it feeling like winter all over again. One question remains: Is there anything the Adelphi community can do to convince administration not to set the clocks two hours backwards?

In order to change this decision by the administration, students need to prove to the administrators what the benefits are to setting the clocks forward. Some of the benefits they could talk about include more time outside, more activity being promoted and that it will decrease the amount of sea-

when there is warmer weather. When the weather gets warmer, students can be seen spending time with friends outside and conversing on the quad. By moving the clocks backward, it will make students feel like they are still in winter.

In the end, moving the clocks back-



Setting the clocks forward signifies the start of spring but AU says now you lose two hours.

sonal depression on campus. According to the website timely.md, 5 percent of adults in the United States experience Seasonal Affective Disorder and it lasts 40 percent of the year. This is caused by shorter hours of sunlight in the winter time, which makes it challenging for people to get out and enjoy the sunshine. From personal experience, I've noticed that campus has much more life on it during the springtime, especially

wards by two hours could end up making the semester more challenging than it already is. This decision could be detrimental to the Adelphi community because while professors think that it could increase students' concentration, it actually causes students to feel more depressed and wishing for the spring season to start. Please, give us back our hours!

Disney World Coming to NYC

Continued from page 1

of buildings to even have the space!"

Julianne Farrell, a third-year mathematics major, said, "I personally think it would never work unless it was like a virtual reality theme park."

The one positive thing that Disneyland NYC has going for it in the eyes of Adelphi students is the fact that it will be built on Staten Island.

Renée McNeely, a first-year with an undeclared major, said, "Disney sucks but at least they got rid of Staten Island for it."

Ricardo Rey, a first-year history major, said, "Disney, with their infinite money in their private bank stored in Nova Scotia, can easily make their own floatable island near New York City." He added that Disneyland NYC would cause more influx of traffic, people and tourists.

Despite the feedback, Disneyland NYC will still be opening in the summer of 2024.

Be sure to check out more about Mickey's secret surveillance satellite at thedelphianau.com.

Who is M&M? Mystery Has Staff Flummoxed

BY LIZZ PANCHYK

The M&M “story” has been circling around *The Delphian* Instagram for a few months now, particularly whenever this newspaper asks on the story for comments about what the audience liked about the most recent issue. But who is “M&M?” Sure, M&Ms are a famous candy that we all know and love, but what is this person referring to when they say M&M? Are they people? Friends? A couple? Well, it’s time we dig a little deeper and discover the truth about M&M. *The Delphian* and its fans must know the facts!

It’s really up to interpretation who our culprits are, but let’s see what evidence we’ve got to use when unmasking our M&M. It’s been building and anticipating for far too long. Everyone is dying to know who our infamous M&Ms are.

So what is the significance of the letter M? It must be right here on our very *Delphian* staff if the person refers to M&M as a person

or persons who write articles. There are a number of people it could be, as it could be a reference to a first name, last name or it might even be a nickname for someone. But it has also been used as a generalized reference to “enjoy some quality time” with. However, besides the reference to the letter “M,” the only other clue I could get was what they are like.

They do indeed represent the actual candy M&Ms’ personalities. There are two; the red M&M and the orange M&M. It is said that these two are the ones that best represent the personalities of the two people that this whole thing is about. According to the M&M website, the red M&M loves his celebrity status, is a perfectionist simply because he is perfect, and he is charismatic, smart and has great humility. The orange M&M, however, is a more anxious guy and is very much aware of his surroundings. He’s portrayed as a bit silly and goofy because of his fear of everyone and everything. And also, he cannot take a joke.

So, so far we know that M and M are



Screenshotted *Delphian* story continuing the mysterious M&M saga

two separate people, considering they each represent a different M&M. Now let’s limit it down to just our *Delphian* editors and writers. If both M’s are representing either a first or last name that begins with this letter, then we can limit it down even more.

Those with the first name that begins with the letter M on our staff are as follows: Mitch Cohen, Myles Elridge, Mylo Fisherman and our editor-in-chief Maxmillian Robinson. The writer with the last name beginning with M is Lilyen McCarthy.

Ultimately, I think it is up to the people to vote for who they think “M&M” is based on their writing style or if you happen to know any of our writers personally. Who will match best with the red M&M? Who will match best with the orange M&M? If we don’t come to know the truth, we might as well have fun with it! Feel free to use these clues or do some sleuthing of your own.

Business School Announces New Major in Becoming an Influencer

BY MYLO FISHERMAN

In our modern age where everyone is on social media, Adelphi is coming around to the times and, starting fall 2022 you can now major in becoming an influencer. This new major will be a part of Adelphi’s business school and will give students the opportunity to learn first-hand the tools and resources that they will need to ultimately give themselves an upper hand in the world of social media.

A new major always comes along with new classes. You will be able to choose from different courses tailored to have you ready for Insta-fame upon graduation. From the selection, there will be a class called, “How to Beat the YouTube Algorithm.” For this class, Adelphi will be hiring Matthew Patrick, better known as MatPat, as an adjunct professor. In addition to this, he has 12.4 million subscrib-

ers on his channel “The Game Theorist” and has a vast variety of knowledge on how the YouTube algorithm works from his 10 years of creating content on the platform.

Another class that is going to be available is, “How to Avoid a Scandal.” This class will be taught by Shane Dawson. With his 23.3 million subscribers and 11-plus years of producing content on YouTube, he has dealt with his fair share of scandals and has the knowledge to pass down to us as soon as to be influencers.

In addition to these classes, Adelphi will also have “How to Take the Perfect Selfie,” “How to Find Your Aesthetic,” “How to Find the Perfect Caption,” “How to Make Clickbait Believable,” and so many others. These classes will be available to majors as well as non-majors. The classes will fulfill general education requirements of arts and/or humanities,

depending on the class, as well as fulfilling your global awareness learning goal.

The buzz about this new major is starting to fly around campus. *The Defiler* interviewed a few students on campus to get their opinion on the new major.

Valery Valasquez, a senior, said, “I know a lot of people who would be interested in this major. I looked at some of the classes and I wish I was able to change my major to it. I wish they hadn’t waited until after I graduate!”

Saira Amar, also a senior, said, “Oh, my gosh, I’m so excited for the new influencer major. I want to increase my following to be as exponential as possible. If only I could stay here longer so I can take these classes in the fall.”

With reviews as amazing as this, how can you not want to major in “Becoming an Influencer?”

If you still aren’t fully sold on this new career path, think about the money you will be making. When you first start out, maybe the first year or so of your career, you are looking at making anywhere from \$30,000 to \$60,000 annually. As you start to grow and gain popularity, you can make anywhere from \$40,000 to \$100,000 annually and sometimes even more.

The only way to make it big like this and make this high-paying salary is to enroll in the major before the classes are full. If you are undecided or are not fully sold on the major that you currently have at the moment, talk to your advisors now about switching to living the life Instagrammers dream about. But hurry; *The Defiler* has learned that due to the Instagram buzz around this major, there may only be one spot left!

Panther Athlete Ronnie Silva Ecstatic to Play D1 Basketball

BY MAXMILLIAN ROBINSON

Adelphi University, an institution founded in 1896, is home to 23 athletic sports teams. With the exception of the bowling team (which competes at the NCAA Division I level), the rest of athletics compete in Division II. It looks like that will be changing soon, as the Garden City campus announces that it will be moving out of the Northeast 10 conference, into the Big 10 conference, for Division I competition.

Among those excited about the transition, men’s basketball player, senior Ronnie Silva expresses his gratitude. With a canceled basketball season due to Covid-19 in his junior year, the point guard finished his third year of collegiate play averaging 20.4 points per game, 2.7 rebounds and 3.2 assists. Among those statistics, Silva also earned honors, being named to the NE10 All-Conference First Team for the second year in a row, the first time in Adelphi basketball history. Now moving into a new conference and division, he has high hopes to continue his streak of success.

“It’s an exciting feeling to be playing at the D1 level,” Silva said. “The thing that

excites me the most is being able to travel and play at the highest level of college basketball.”



A conference rookie of the year, academic all district athlete and an all conference mention, Ronnie Silva plans to go above and beyond in his new Big 10 conference home.

The Big 10 basketball conference is filled with teams that hold prestigious history. Programs like Ohio State University, Michigan State University, Michigan, Penn State and

Maryland, that regularly compete in tournaments that are streamed nationally in America. Most notably March Madness, a combination of the 64 best college basketball teams in the nation, dueling to hoist a championship to add to their legacy.

Within this conference, are heated rivalries. Ohio State versus Penn State, Michigan and Michigan State, but now Adelphi will soon join the mix. Being the first school from New York to join, could there soon be a rivalry between the Panthers and Scarlet Knights, who lie across the Hudson River in New Jersey?

“I don’t have any school in particular that I would want to compete with the most because I want to compete with everybody,” Silva mentioned. “The [Big 10] is one of the most competitive conferences in the nation and I’m looking forward to the opportunity.”

Competing in a bigger conference means more exposure, leading to more opportunities to grace the television screen. This allows for more scouts and talent from the National Basketball Association and other leagues across the world to search for their next superstar. With this viewing, it could be

leveraged in all sorts of ways.

“Knowing that [millions] will be watching our game is an exciting feeling,” Silva said. “We can’t wait to give our full effort to represent [Adelphi] with a larger audience watching.”

With the NCAA approving the name, image and likeness of players for profitability in 2021, this allows athletes in college to receive compensation for jersey sales, memorabilia and items with their face featured on the product. Now, coming onto the Division I stage, Adelphi players have chances to be featured in photoshoots, commercials and movies covering the Big 10 conference. While not everyone is camera ready, Silva seems ready to thrust himself into the spotlight.

“Yes I would,” he said jovially when asked about the idea of being on the big screen. “Doing a commercial and actually being on TV would be a great opportunity.”

Adelphi starts the 2022-2023 athletic season with a fresh record, and a new conference beginning. While the full regular season schedule has yet to be finalized, mark your calendars for when Adelphi plays Villanova in a preseason exhibition on Nov. 7.